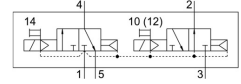
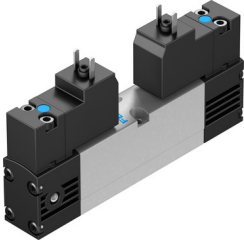


# Air solenoid valve VSVA-B-T32H-AH-A2-1C1

FESTO

Part number: 547067



## Data sheet

| Feature  | Value   |
|--|---|
| Valve function   | 2x3/2, open/closed, monostable  |
| Actuation type   | Electrical  |
| Valve size   | 18 mm   |
| Standard nominal flow rate   | 400 l/min   |
| Pneumatic working port   | Sub-base, size 18 mm as per ISO 15407-1<br>Size 02 sub-base as per VDMA 24563<br>G1/8 |
| Operating voltage  | 24V DC  |
| Operating pressure   | 0.2 MPa ... 1 MPa   |
| Operating pressure   | 2 bar ... 10 bar  |
| Structural design  | Piston gate valve   |
| Reset method   | Pneumatic spring  |
| Certification  | c UL us - Recognized (OL)   |
| Degree of protection   | IP65<br>NEMA 4  |
| Nominal width  | 5 mm  |
| Type code  | VSVA  |
| Exhaust air function   | With flow control option  |
| Sealing principle  | Soft  |
| Mounting position  | Any   |
| Conforms to standard   | ISO 15407-1<br>VDMA 24563   |
| Manual override  | Non-detenting   |
| Type of control  | Pilot-controlled  |
| Pilot air supply port  | Internal  |
| Flow direction   | Non-reversible  |
| Symbol   | 00992808  |
| Lap  | Overlap   |
| Signal status display  | LED   |
| Pilot pressure MPa   | 0.3 MPa ... 1 MPa   |
| Pilot pressure   | 3 bar ... 10 bar  |
| Flow rate of pneumatic valve   | 600 l/min   |
| Flow rate of pneumatic valve on individual sub-base                    | 450 l/min   |
| Optimized flow rate of pneumatic valve pneumatically concatenated flow | 400 l/min   |
| Switching time off   | 21 ms   |
| On switching time  | 13 ms   |
| Duty cycle   | 100%  |

| Feature                                   | Value  |
|---|--|
| Max. positive test pulse with 0 signal    | 1000 µs  |
| Max. negative test pulse on 1 signal      | 800 µs   |
| Coil characteristics                      | 24 V DC: 1.8 W   |
| Permissible voltage fluctuations          | -15 % / +10 %  |
| Operating medium                          | Compressed air as per ISO 8573-1:2010 [7:4:4]  |
| Information on operating and pilot media  | Operation with oil lubrication possible (required for further use)                   |
| Vibration resistance                      | Transport application test with severity level 2 as per FN 942017-4 and EN 60068-2-6 |
| Shock resistance                          | Shock test with severity level 2 as per FN 942017-5 and EN 60068-2-27                |
| Corrosion resistance class (CRC)          | 0 - No corrosion stress  |
| Temperature of medium                     | -5 °C ... 50 °C  |
| Relative air humidity                     | 0 - 90 %   |
| Noise level                               | 85 dB(A)   |
| Pilot medium                              | Compressed air as per ISO 8573-1:2010 [7:4:4]  |
| Ambient temperature                       | -5 °C ... 50 °C  |
| Max. tightening torque for valve mounting | 1 Nm   |
| Product weight                            | 174 g  |
| Electrical connection                     | Form C<br>as per DIN EN 175301-803<br>Without PE conductor                           |
| Type of mounting                          | On sub-base  |
| Auxiliary pilot air port 12               | Sub-base, size 18 mm as per ISO 15407-1  |
| Auxiliary pilot air port 14               | Sub-base, size 18 mm as per ISO 15407-1  |
| Pilot exhaust air port 82/84              | Not ducted as per standard<br>Ducted   |
| Pneumatic connection 1                    | Sub-base, size 18 mm as per ISO 15407-1  |
| Pneumatic connection 2                    | Sub-base, size 18 mm as per ISO 15407-1  |
| Pneumatic connection 3                    | Sub-base, size 18 mm as per ISO 15407-1  |
| Pneumatic connection 4                    | Sub-base, size 18 mm as per ISO 15407-1  |
| Pneumatic connection 5                    | Sub-base, size 18 mm as per ISO 15407-1  |
| Pilot interface                           | as per ISO 15218   |
| Note on materials                         | RoHS-compliant   |
| Seals material                            | HNBR<br>NBR  |
| Housing material                          | Die-cast aluminum  |
| Material of screws                        | Steel<br>Galvanized  |